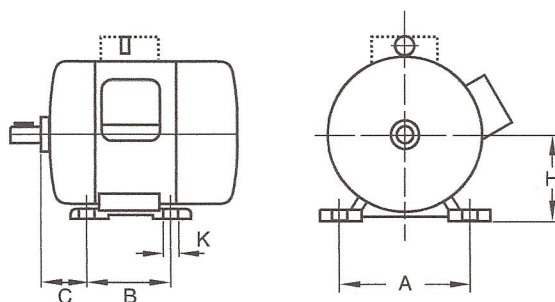


## IEC MOUNTING DIMENSIONS—FOOT-MOUNTED AC AND DC MACHINES

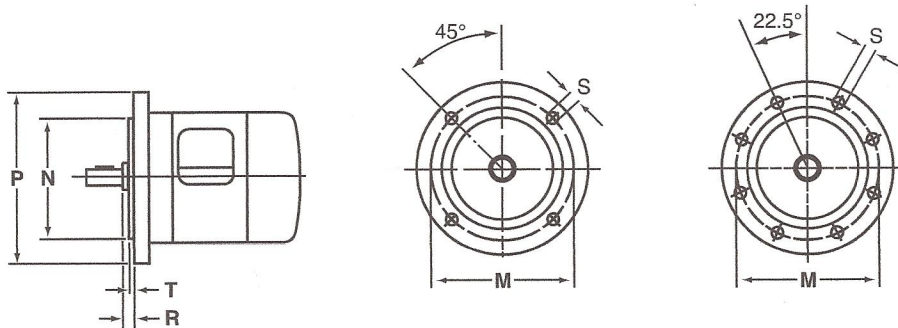
DIMENSIONS IN MILLIMETERS



Frame number	H	A	B	C	K	Bolt or screw
56M	56	90	71	36	5.8	M5
63M	63	100	80	40	7	M6
71M	71	112	90	45	7	M6
80M	80	125	100	50	10	M8
90S	90	140	100	56	10	M8
90L	90	140	125	56	10	M8
100S	100	160	112	63	12	M10
100L	100	160	140	63	12	M10
112S	112	190	114	70	12	M10
112M	112	190	140	70	12	M10
132S	132	216	140	89	12	M10
132M	132	216	178	89	12	M10
160S	160	254	178	108	14.5	M12
160M	160	254	210	108	14.5	M12
160L	160	254	254	108	14.5	M12
180S	180	279	203	121	14.5	M12
180M	180	279	241	121	14.5	M12
180L	180	279	279	121	14.5	M12
200S	200	318	228	133	18.5	M16
200M	200	318	267	133	18.5	M16
200L	200	318	305	133	18.5	M16
225S	225	356	286	149	18.5	M16
225M	225	356	311	149	18.5	M16
250S	250	406	311	168	24	M20
250M	250	406	349	168	24	M20
280S	280	457	368	190	24	M20
280M	280	457	419	190	24	M20
315S	315	508	406	216	28	M24
315M	315	508	457	216	28	M24
355S	355	610	500	254	28	M24
355M	355	610	560	254	28	M24
355L	355	610	630	254	28	M24
400S	400	686	560	280	35	M30
400M	400	686	630	280	35	M30
400L	400	686	710	280	35	M30

Reference: IEC Stds. 60072-1 Standards. For tolerances on dimensions, see IEC Stds. 60072-1, 6.1, Foot-Mounted Machines, Table 1.

**IEC FLANGE-MOUNTED AC AND DC MACHINES DIMENSIONS FOR FLANGES**  
**DIMENSIONS IN INCHES**



Flange number (FF-FT) <sup>1</sup>	M	N	P <sup>2</sup>	R	Number of holes	S Free holes (FF)	Tapped holes (FT) <sup>3</sup> thread	T maximum
55	55	40	70	0	4	5.8	M5	2.5
65	65	50	80	0	4	5.8	M5	2.5
75	75	60	90	0	4	5.8	M5	2.5
85	85	70	105	0	4	7	M6	2.5
100	100	80	120	0	4	7	M6	3
115	115	95	140	0	4	10	M8	3
130	130	110	160	0	4	10	M8	3.5
165	165	130	200	0	4	12	M10	3.5
215	215	180	250	0	4	14.5	M12	4
265	265	230	300	0	4	14.5	M12	4
300	300	250	350	0	4	18.5	M16	5
350	350	300	400	0	4	18.5	M16	5
400	400	350	450	0	8	18.5	M16	5
500	500	450	550	0	8	18.5	M16	5
600	600	550	660	0	8	24	M20	6
740	740	680	800	0	8	24	M20	6
940	940	880	1000	0	8	28	M24	6
1080	1080	1000	1150	0	8	28	M24	6

<sup>1</sup> This table does not apply to FI flange.

<sup>2</sup> The external outline of mounting flanges up to and including FF300 and FT300 may be other than circular. Dimension P may deviate from that given in the table only on the minus side.

<sup>3</sup> For FT flange-mounted machines, it is recommended that the free holes in the mounting part should be as shown in Column S for the corresponding size of FF flange.

**DESIGNATION OF FLANGE-MOUNTED MACHINES**

FF flange—Flange with free holes (clearance holes).

FT flange—Flange with tapped holes and with diameter N smaller than the diameter M.

FI flange—Flange with tapped holes and with diameter N greater than the diameter M.

Reference: IEC 60072-1 Stds. For tolerances on dimensions, see IEC Stds. 60072-1, 6.2, Flange-Mounted Machines, Table 3.